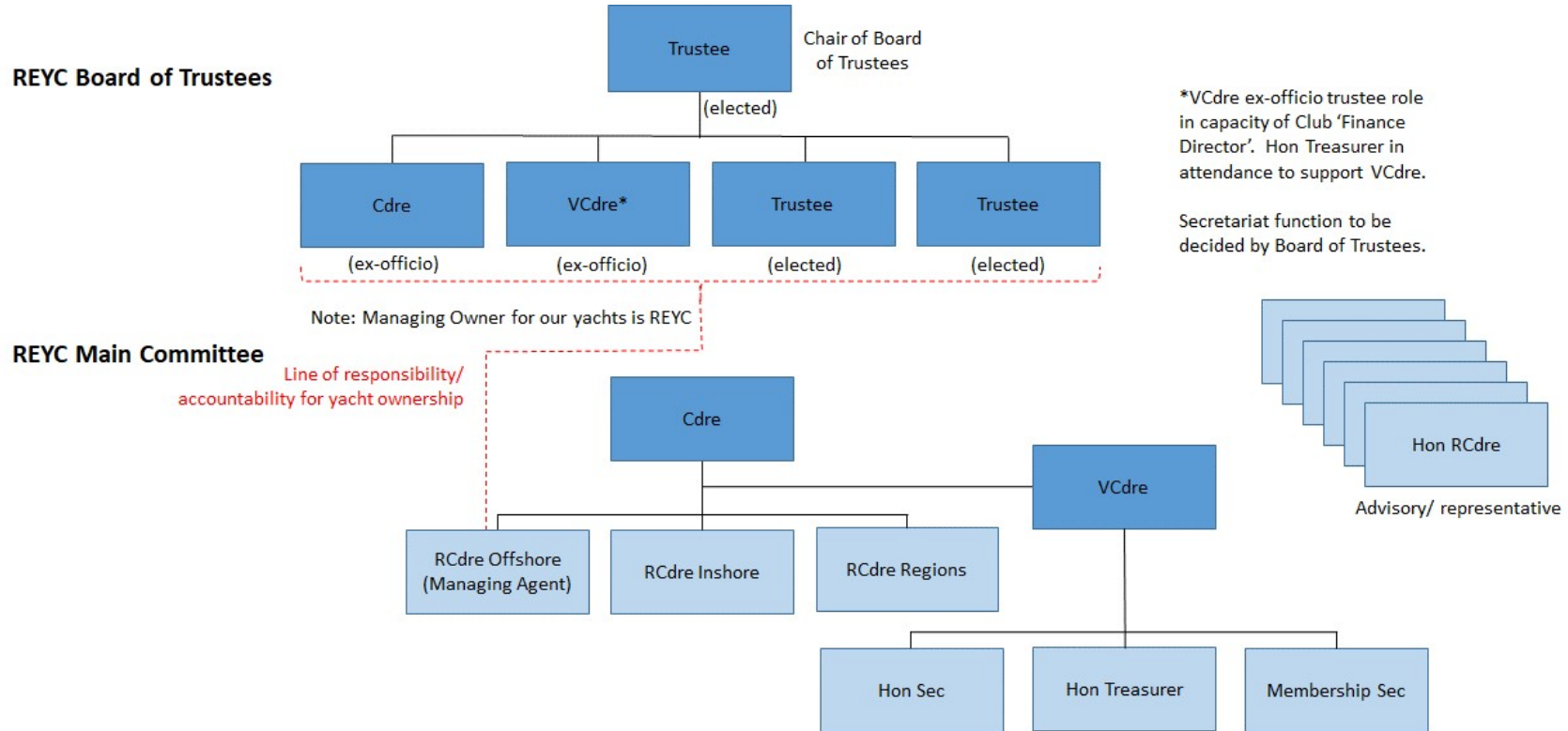


PROPOSED REYC GOVERNANCE STRUCTURE FOR ASSOCIATION MODEL CIO

1. Organisation chart



2. Principles

- a. **Role of the Board of Trustees:**
- Oversight of REYC as a Charitable Incorporated Organisation
 - Strategic planning
 - Direction to Main Committee
 - To be answerable to members.

- b. **Role of the Main Committee:**
- Development of strategic options for consideration by the Board of Trustees
 - Operational Management of REYC (including alignment with Corps Sports Policy)
 - Oversight of routine Club activities managed by VCdre, RCdres and their sub-committees
 - Reporting to Board of Trustees.
- c. It is important that Club members see the Cdre as the senior Flag Officer of the Club, and the Main Committee as its principal management body (ie no change from current arrangement). However, it is also important that members understand the charitable nature of the Club and the role of the Board of Trustees. External relations (eg with ASCB, ASA, other Clubs etc) should be conducted predominantly by the Main Committee.
- d. All relationships with the Charity Commission must be conducted through the Board of Trustees and the Board will, in future, run AGMs in order to meet Charity Commission requirements. That will not preclude reports being presented by Main Committee members, as now.
- e. The relationship between the Board of Trustees and Main Committee could be considered analogous to the business relationship between a Board of Directors (led by Chairman) and the Executive Committee (led by CEO).

3. Notes

- a. Club Patron not shown. No change suggested.
- b. Chair of Board of Trustees should be one of the elected trustees. He/she will be elected by the other trustees. The Chair and one of the other elected trustees should be past REYC Flag Officers and shall be long-standing REYC members.
- c. The third elected trustee (when appointed) shall be elected to bring complementary experience to the Board and therefore may not always be an REYC member.
- d. Role of Managing Agent to rest formally with RCdre (O). As Managing Agent, RCdre(O) will be answerable directly to the Board of Trustees as corporate owners of Club yachts; however RCdre(O) will continue to work to the Cdre for other management issues. Managing Agent responsibilities include all aspects of yacht management including Ownership, Registration, SCV Coding and Insurance.
- e. Quarterly meetings of Board of Trustees suggested, aligned to CC reporting cycle. Main Committee meetings aligned to meet requirements of Board of Trustees.

- f. No change is proposed to Main Committee structure, although consideration should be given to allocating Hon Treasurer and/or Hon Secretary roles to retired officers to promote continuity, recognising the need for roles in which serving individuals can gain experience in preparation for senior Club appointments.
- g. Terms of Reference for all roles to be developed in due course.